

JAD025R Series DC Fan Cross Flow Fan

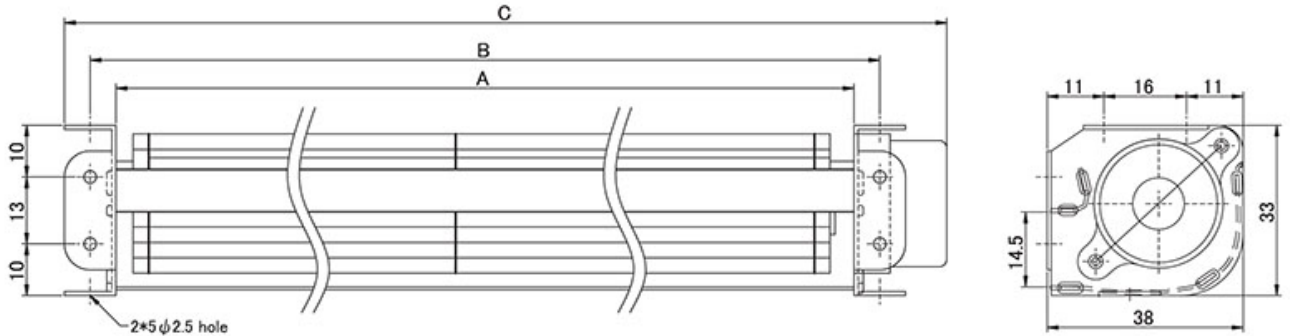
FEATURES

129mm (5.1in) to 330mm (12.9in) lengths. DC Brushless type motor, temperature resistant aluminum alloy, ball or sleeve bearings. Maximum Pressure: 1.3mmAq (0.051inH2O) to 1.8mmAq (0.070inH2O), Maximum Air Flow: 11CFM (0.31cmm) to 30CFM (0.85cmm). CE listed.



DIMINSIONS

(size:mm)



Dimensions and Specifications are subject to change without notice,
please refer to the actual product.

SPECIFICATIONS

| Model \ Spec | Size(mm) | | | Rated Voltage V | Rated Current A | Speed r.p.m | Max Pressure mmAq | Maximun Air Flow | | Noise dBA | Safety Approval | | | Weight g |
|---------------|----------|-----|-----|--------------------|--------------------|----------------|----------------------|------------------|------|--------------|-----------------|-----|----|-------------|
| | A | B | C | | | | | CFM | CMM | | UL | TUV | CE | |
| JAD02509R123B | 98 | 108 | 129 | 12 | 0.11 | 3100 | 1.6 | 11 | 0.31 | 32 | | | O | 95 |
| JAD02515R123B | 160 | 170 | 191 | 12 | 0.13 | 2700 | 1.4 | 16 | 0.45 | 29 | | | O | 120 |
| JAD02519R123B | 198 | 208 | 229 | 12 | 0.14 | 2500 | 1.3 | 18 | 0.51 | 28 | | | O | 140 |
| JAD02524R123B | 250 | 260 | 282 | 12 | 0.20 | 2600 | 1.8 | 25 | 0.70 | 32 | | | O | 160 |
| JAD02529R123B | 298 | 308 | 330 | 12 | 0.21 | 2500 | 1.6 | 30 | 0.85 | 33 | | | O | 180 |

Jia Chuan Technology